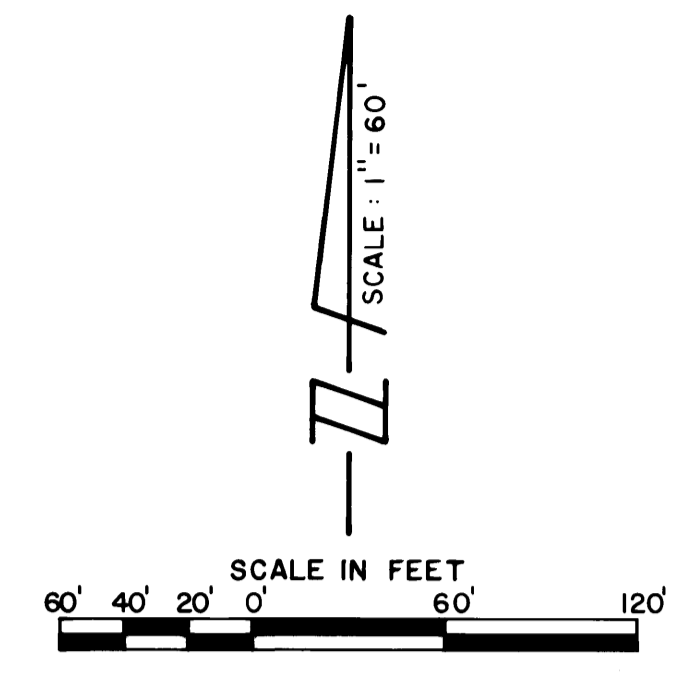


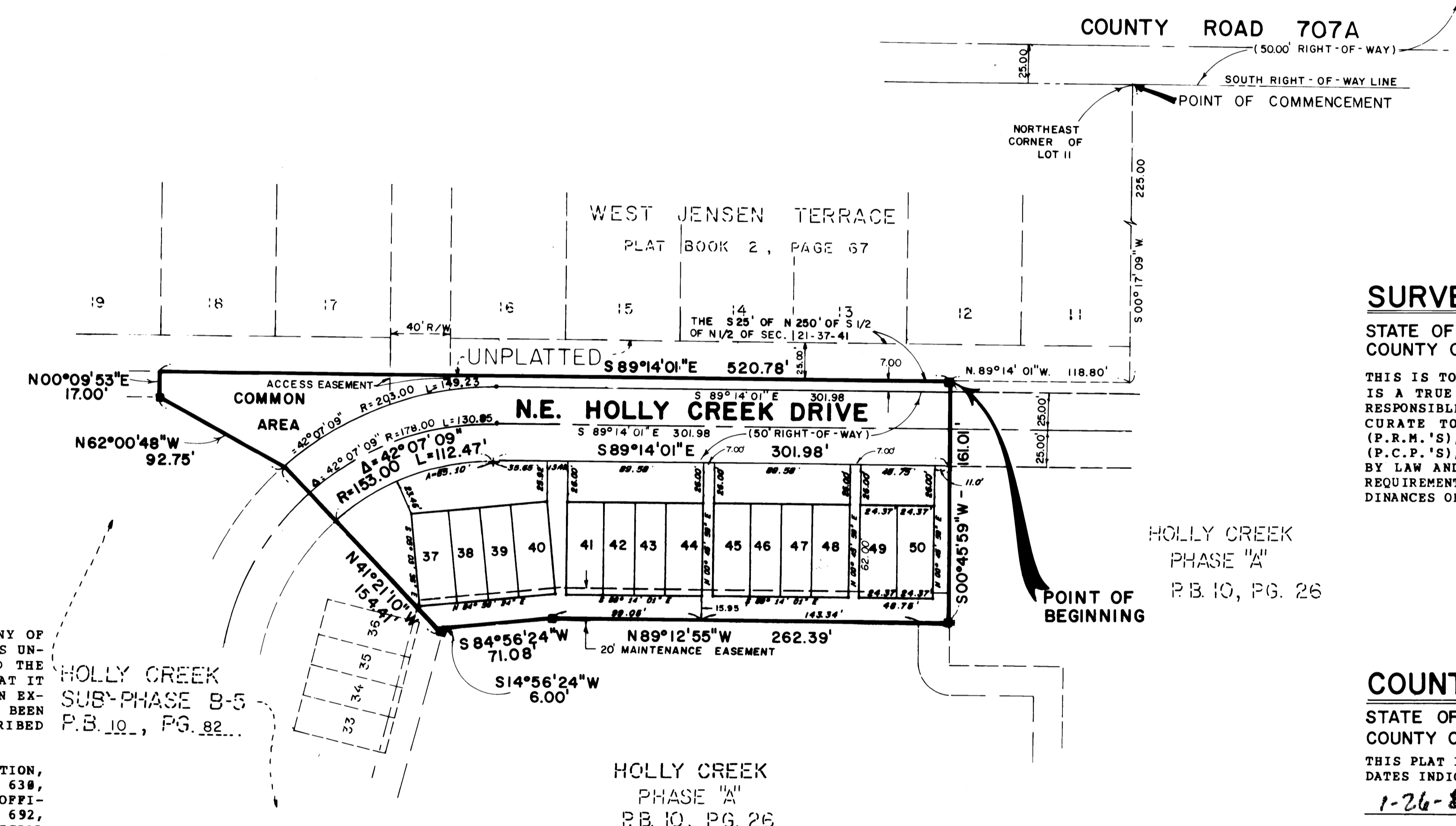
JANUARY, 1988
SHEET 2 OF 2

A PLAT OF HOLLY CREEK SUB-PHASE "B-6" AND A PORTION OF SUB-PHASE "B-1" (INFRASTRUCTURE) BEING A PORTION OF SECTION 21 TOWNSHIP 37 SOUTH, RANGE 41 EAST MARTIN COUNTY, FLORIDA



I, Marsha Stiller, Clerk of the Circuit Court of Martin County, Florida, hereby certify that this Plat was filed for record in Plat Book 11, Page 33, Martin County, Florida, Public Records, this day of 1988.
Marsha Stiller, Clerk Circuit Court Martin County, Florida
By: Deputy Clerk
File No.
(Circuit Court Seal)

Bearing Base:
The South line of West Jensen Terrace is taken as being N 89°14'01" W, and all other bearings are relative thereto.



SURVEYOR'S CERTIFICATE

STATE OF FLORIDA
COUNTY OF MARTIN
S.S.
THIS IS TO CERTIFY THAT THIS PLAT OF HOLLY CREEK, SUB-PHASE B-6 IS A TRUE AND CORRECT REPRESENTATION OF A SURVEY MADE UNDER MY RESPONSIBLE DIRECTION AND SUPERVISION AND THAT SAID SURVEY IS ACCURATE TO THE BEST OF MY KNOWLEDGE AND BELIEF AND THAT (P.R.M.'S), PERMANENT REFERENCE MONUMENTS HAVE BEEN SET AND THAT (P.C.P.'S), PERMANENT CONTROL POINTS WILL BE PLACED AS REQUIRED BY LAW AND FURTHER THAT THE SURVEY DATA COMPLIES WITH ALL THE REQUIREMENTS OF CHAPTER 177, FLORIDA STATUTES, AS AMENDED AND ORDINANCES OF MARTIN COUNTY, FLORIDA.

David M. Jones
DAVID M. JONES
REGISTERED SURVEYOR NO. 3989
STATE OF FLORIDA

COUNTY APPROVAL

STATE OF FLORIDA
COUNTY OF MARTIN
S.S.
THIS PLAT IS HEREBY APPROVED, BY THE UNDERSIGNED, ON THE DATE, OR DATES INDICATED.

1-26-88
January 26, 1988
January 26, 1988
January 26, 1988

Donald E. Williams
DONALD E. WILLIAMS
COUNTY ENGINEER

Thomas P. Brown
THOMAS P. BROWN
COUNTY ATTORNEY

PLANNING AND ZONING COMMISSION
MARTIN COUNTY, FLORIDA

BY: *Joseph J. Hall*
JOSEPH J. HALL
CHAIRMAN

BOARD OF COUNTY COMMISSIONERS
MARTIN COUNTY, FLORIDA

BY: *Marsha Stiller*
MARSHA STILLER
CLERK

ATTEST: *Marsha Stiller*
By: *Deborah Langston* (OC)
CLERK

TITLE CERTIFICATION

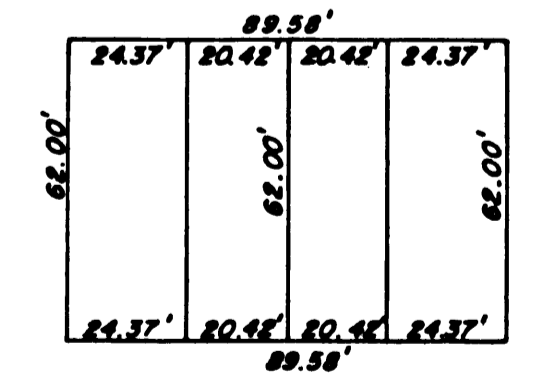
STATE OF FLORIDA
COUNTY OF MARTIN
S.S.
A.T.C.O. TITLE SERVICES, INC. D/B/A/ ASSURANCE TITLE COMPANY OF MARTIN COUNTY, DULY LICENSED IN THE STATE OF FLORIDA, BY ITS UNDERSIGNED PRESIDENT, HEREBY CERTIFIES THAT IT HAS CAUSED THE TITLE, TO THE HEREON DESCRIBED PROPERTY, TO BE EXAMINED, THAT IT FINDS THE TITLE TO THE PROPERTY IS VESTED TO THE CORPORATION EXECUTING THE DEDICATION HEREON. THAT THE CURRENT TAXES HAVE BEEN PAID, AND THAT THE MORTGAGES ENCUMBERING THE LAND DESCRIBED HEREON ARE AS FOLLOWS:

- MORTGAGE FROM H.C. PROPERTIES, INC., A FLORIDA CORPORATION, TO LOUISE PEARCE, AS RECORDED IN OFFICIAL RECORDS BOOK 630, PAGE 195, AND AS MODIFIED BY INSTRUMENTS APPEARING IN OFFICIAL RECORDS BOOK 676, PAGE 1353, ALONG WITH THAT CERTAIN COLLATERAL ASSIGNMENT AS RECORDED IN OFFICIAL RECORDS BOOK 676, PAGE 1368, AND THAT CERTAIN FINANCING STATEMENT AS RECORDED IN OFFICIAL RECORDS BOOK 676, PAGE 1364.
- MORTGAGE FROM H.C. PROPERTIES, INC., A FLORIDA CORPORATION TO FIRST NATIONAL BANK AND TRUST AS RECORDED IN OFFICIAL RECORDS BOOK 676, PAGE 1353, ALONG WITH THAT CERTAIN COLLATERAL ASSIGNMENT AS RECORDED IN OFFICIAL RECORDS BOOK 676, PAGE 1368, AND THAT CERTAIN FINANCING STATEMENT AS RECORDED IN OFFICIAL RECORDS BOOK 676, PAGE 1364.
- MORTGAGE FROM H.C. PROPERTIES, INC., A FLORIDA CORPORATION, TO FIRST NATIONAL BANK AND TRUST COMPANY, AS RECORDED IN OFFICIAL RECORDS BOOK 692, PAGE 177.
- COLLATERAL ASSIGNMENT FROM H.C. PROPERTIES, INC., A FLORIDA CORPORATION TO FIRST NATIONAL BANK AND TRUST COMPANY AS RECORDED IN OFFICIAL RECORDS BOOK 715, PAGE 485.
- MORTGAGE FROM H.C. PROPERTIES, INC., A FLORIDA CORPORATION TO FIRST NATIONAL BANK AND TRUST COMPANY AS RECORDED IN OFFICIAL RECORD BOOK 715, PAGE 418, TOGETHER WITH THAT CERTAIN COLLATERAL ASSIGNMENT AS RECORDED IN OFFICIAL RECORDS BOOK 715, PAGE 425, AND THAT CERTAIN FINANCING STATEMENT AS RECORDED IN OFFICIAL RECORDS BOOK 715, PAGE 438.
- MORTGAGE FROM H.C. PROPERTIES, INC., A FLORIDA CORPORATION TO SEABOARD SAVINGS BANK, F.S.B. AND ITS SUCCESSORS AND/OR ASSIGNS RECORDED IN OFFICIAL RECORDS BOOK 727, PAGE 136.

February 23, 1988
DATE
BY: *Relia A. Paul*
RELIA PAUL, PRESIDENT

A.T.C.O. TITLE SERVICES, INC.
D/B/A ASSURANCE TITLE CO.
OF MARTIN COUNTY
FIRST NATIONAL BANKING CENTER
815 COLORADO AVENUE, SUITE 318
STUART, FLORIDA 34994

- LEGEND:**
- - DENOTES FND. P.R.M. (PERMANENT REFERENCE MONUMENT) * 959
 - - DENOTES P.C.P. (PERMANENT CONTROL POINT)



TYPICAL LOT DIMENSIONS
1"=40'

- NOTES:**
- EACH NUMBER TRACT DEPICTED HEREON IS A LOT.
 - THERE SHALL BE NO BUILDING OR ANY OTHER KIND OF CONSTRUCTION OR TREES OR SHRUBS PLACED ON DRAINAGE EASEMENTS.
 - THERE SHALL BE NO BUILDING OR OTHER PERMANENT STRUCTURES PLACED ON UTILITY EASEMENTS.
 - THERE SHALL BE NO LOT SPLITS EXCEPT TO CREATE LARGER LOTS.

LINDAHL BROWNING FERRARI & HELLSTROM, INC.
Consulting Engineers, Planners & Surveyors
P.O. BOX 727
JUPITER, FLORIDA 33458

10 CENTRAL PARKWAY
SUITE 420
STUART, FLORIDA 33497